



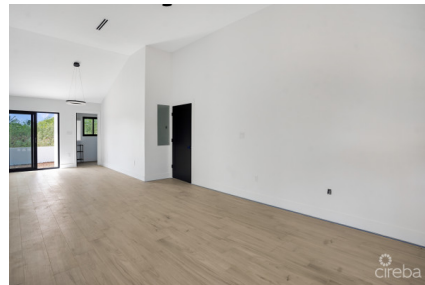
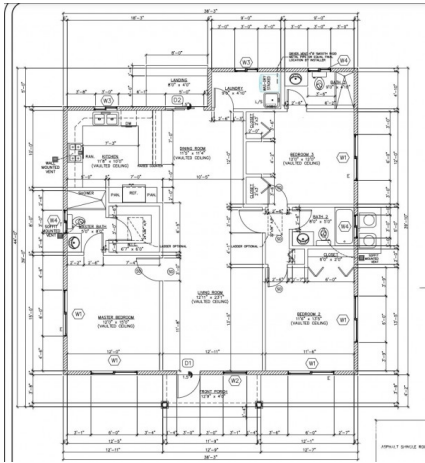
256 Crighton Building, Crewe Rd, PO BOX 1977,
 Grand Cayman, KY1-1104, Cayman Islands
 Phone: +1 (345) 949-7099
 Fax: +1 (345) 949-6819
 Email: info@cireba.com

Saddlewood P2

Savannah / Lower Valley, Grand Cayman

MLS# 416301

CI\$580,000



RAFFAELE DELLOGLIO

raffaele.delloglio@sothebysrealty.ky

This beautiful pre construction house, is the perfect home for a growing family or young executives.

It is located only few minutes away from The Village in Savannah and the Bypass.

The house has a modern look , bright and airy with high ceiling, and offers an open lay out, 3b 3b, large kitchen, quartz counters tops, electric stove, Washer and Dryer, Dish washer, Microwave, good storage, split AC, large patio, fenced all around, commercial grade hurricane windows and doors. The CO on the house, is now received. Move in ready. Do not waste time, call now for an appointment.

Essential Information

Type Residential	Status Current	MLS# 416301	Listing Type Single Family Home
----------------------------	--------------------------	-----------------------	---

Key Details

Bed 3	Bath 3
-----------------	------------------

View
Garden View

Year Built 2023	Sq.Ft. 1,535
---------------------------	------------------------

Additional Feature

Den No	Pool No	Foundation Slab	Stories 1
------------------	-------------------	---------------------------	---------------------

Furnished No	Garage No
------------------------	---------------------