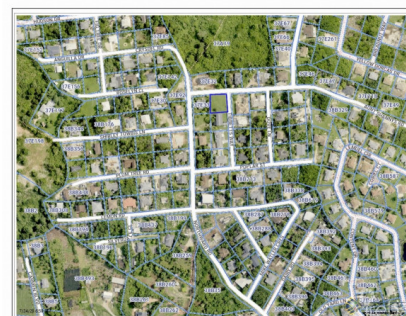
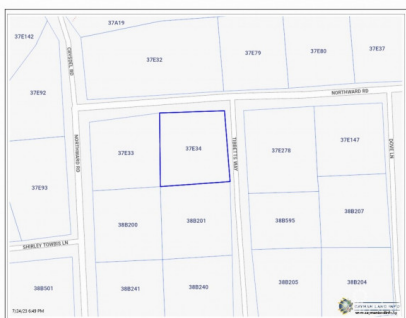
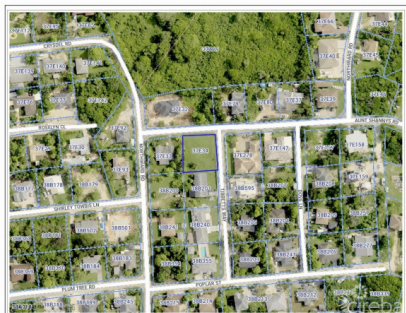


Land At The Corner Of Northward Rd And Tibbetts Way

Savannah / Lower Valley, Grand Cayman

MLS# 416338

CI\$180,000



LERNA PHILLIPS

345-945-4411

lerna@coldwellbankercayman.com

Residential land in Northward at the corner of Northward Road and Tibbetts Way. The lot is .25 acres and has road frontage of approximately 100ft with a depth of 100ft. Its about 18 ft above sea level and ideal for building your home or investment property. The lot is cleared, level, and fully fenced with a scattering of fruit trees.

Essential Information

The information contained herein has been furnished by the owner and or their nominee and represented by them to be accurate. The listing company, agent and CIREBA MLS disclaims any liability or responsibility for any inaccuracies, errors or omissions in the represented information and all the information contained herein is subject to errors, omissions, price changes, prior sale or withdrawal, without notice and is at all times subject to verification by the purchaser.

Type
Land

Status
Back On The Market

MLS#
416338

Listing Type
**Low Density
Residential**

Key Details

Width
100

Depth
105

Acreage
0.25

View
Inland