



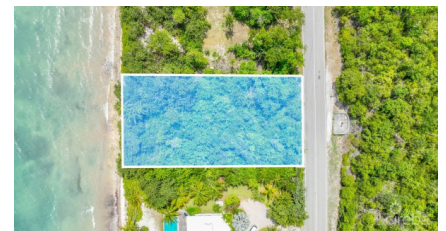
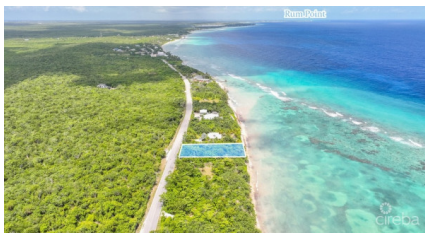
256 Crighton Building, Crewe Rd, PO BOX 1977,  
Grand Cayman, KY1-1104, Cayman Islands  
Phone: +1 (345) 949-7099  
Fax: +1 (345) 949-6819  
Email: info@cireba.com

## Queen's Highway 0.52 Oceanfront Land Parcel

North East Coast / Colliers, Grand Cayman

MLS# 416374

**US\$890,000**





**CHANTELE MILLER**  
 345-233-1385  
 chantele.miller@remax.ky

Dont miss the opportunity to own your piece of oceanfront paradise on the Queens Highway!  
 Build your dream home on this incredible 0.52 acre oceanfront parcel and enjoy endless privacy, peace, and serenity. This location boasts a kaleidoscope of ocean blues, cool trade winds, beautiful sunrises, and stunning sunsets.  
 This property is ideal for enjoying kayaking, paddle-boarding, and some of the very best offshore snorkeling on island! Enjoy the diverse underwater topography, from lush sea beds, to the individual coral communities and stretches of barrier reef. This premier location is home to many species of fish and other marine life. For divers and snorkeling enthusiasts, you will also have close proximity to access the famous Babylon Dive Site, known for its gorgeous freestanding pinnacle rising from over 100 feet in the depths to 45 feet at its peak. The ocean sponge and coral growth allow divers to swim through, on both sides, creating a riveting experience!  
 Away from the hustle and bustle, embrace the Island Time vibe on the North East Coast where you enjoy other local attractions/amenities such as the Queen Elizabeth Botanic Park, Crystal Caves, and Parrot Sanctuary, as well as various bars and restaurants.  
 Adjacent to the Queens Monument, 8-12 ft above sea level, this unique, private, oceanfront property is yours for the taking!

## Essential Information

|                     |                          |                       |  |
|---------------------|--------------------------|-----------------------|--|
| Type<br><b>Land</b> | Status<br><b>Current</b> | MLS#<br><b>416374</b> | Listing Type<br><b>Low Density Residential</b> |
|---------------------|--------------------------|-----------------------|--|

## Key Details

|                        |                            |
|------------------------|----------------------------|
| Width<br><b>95</b>     | Depth<br><b>232</b>        |
| Acreage<br><b>0.52</b> | View<br><b>Water Front</b> |