



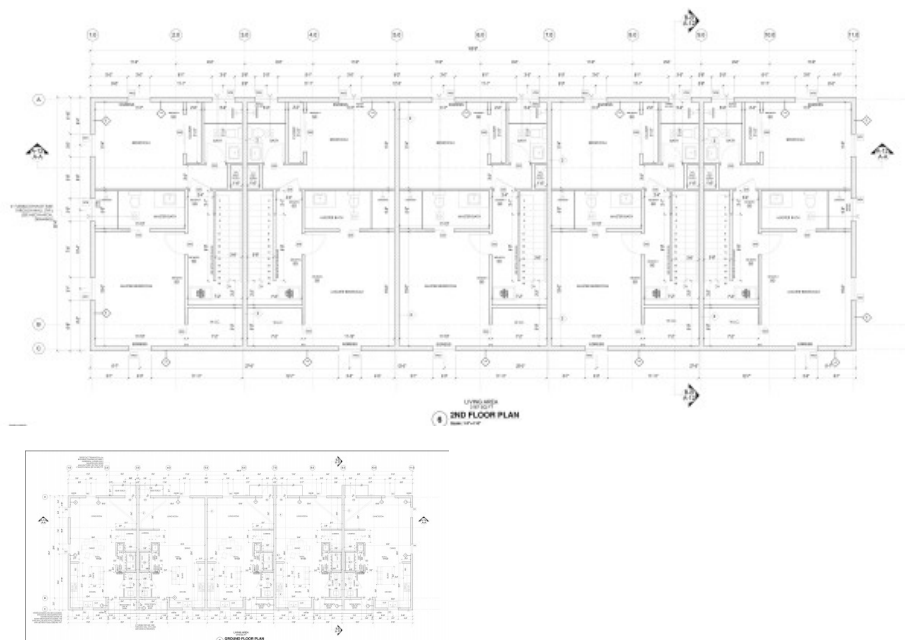
256 Crighton Building, Crewe Rd, PO BOX 1977,
Grand Cayman, KY1-1104, Cayman Islands
Phone: +1 (345) 949-7099
Fax: +1 (345) 949-6819
Email: info@cireba.com

Bridlewood Place - End Unit

Bodden Town / Breakers, Grand Cayman

MLS# 416461

CI\$459,000



KERRI KANUGA

345 916-7020

kerri@tridentproperties.ky



LESLIE BROMFIELD

leslie@tridentproperties.ky

Welcome to this stunning 2 bed/2.5 bath condo in the beautiful Bodden Town of the Cayman Islands. This property offers a perfect blend of comfort, style, and functionality, making it an ideal home for anyone looking to settle down in paradise.

This condo provides easy access to nearby amenities such as schools, shopping centers, restaurants, and pristine beaches. Dont miss out on this incredible opportunity to own a piece of paradise. Contact us to schedule a viewing today.

Essential Information

Type Residential	Status Current	MLS# 416461	Listing Type Condominiums
----------------------------	--------------------------	-----------------------	-------------------------------------

Key Details

Bed 2	Bath 2.5
-----------------	--------------------

View
Garden View

Year Built 2023	Sq.Ft. 1,357	Pets Allowed: Yes
---------------------------	------------------------	-----------------------------

Additional Feature

Den No	Floor Level 1	Furnished No
------------------	-------------------------	------------------------