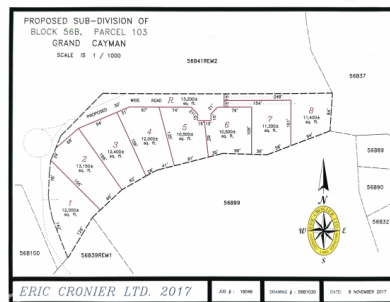


Lot 8 Sub Divided Land Breakers

Bodden Town / Breakers, Grand Cayman

MLS# 417178

CI\$106,000





BOUKE MADDOCK
345-623-9999
bouke@williams2realestate.com

Welcome to Breakers Land Sub Division, a haven for those seeking a piece of paradise in the Cayman Islands. Pre-approved sub-division plots, strategically located in the picturesque area of Breakers Cayman.

Discover Your Haven in Breakers Cayman:

Nestled in the embrace of nature and just a stones throw away from the pristine planned development of Pease Bay public beach, the Breakers Land Sub Division plots offer an unrivalled opportunity for those looking to create their dream homes.

Features that Redefine Living:

These plots come with the assurance of pre-approved sub-divisions, streamlining the process for those eager to embark on their homeownership journey. The proximity to Pease Bay public beach ensures that residents can enjoy the serenity of the sea breeze and the soothing sounds of the waves just moments from their doorstep.

Breakers Cayman - A Serene Escape:

The Breakers area, with its natural beauty and tranquil ambiance, provides the perfect backdrop for your future home. This locale is not just about property; its about creating a lifestyle that transcends the ordinary. Breakers Cayman is more than a location; its an experience.

Unlock the Potential: Perfect for Starter Homes or Development:

These land plots are more than just a canvas; they are the foundation for your dreams. Whether youre envisioning a cozy starter home or planning a larger development, Breakers Land Sub Division offers the canvas for your unique vision. Our plots are designed to accommodate a variety of lifestyles, making it the ideal choice for those seeking versatility in their real estate investment.

Your Journey Begins Here:

Embrace the promise of Breakers Land Sub Division. Request more information today and take the first step toward realizing your dream. Feel free to explore the land on your own and envision your dream. Call us to learn more about the endless possibilities these plots offer.

How do you want to live your life?

Essential Information

Type	Status	MLS#	Listing Type
Land	Pen/Con	417178	Low Density Residential

Key Details

Width	Depth
94	84

The information contained herein has been furnished by the owner and or their nominee and represented by them to be accurate. The listing company, agent and CIREBA MLS disclaims any liability or responsibility for any inaccuracies, errors or omissions in the represented information and all the information contained herein is subject to errors, omissions, price changes, prior sale or withdrawal, without notice and is at all times subject to verification by the purchaser.

Acreage
0.26

View
Garden View