



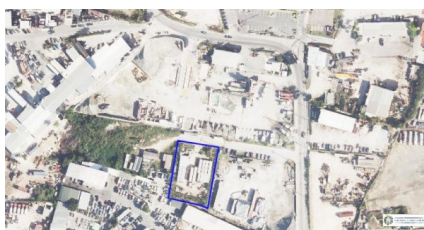
256 Crighton Building, Crewe Rd, PO BOX 1977,  
Grand Cayman, KY1-1104, Cayman Islands  
Phone: +1 (345) 949-7099  
Fax: +1 (345) 949-6819  
Email: info@cireba.com

## Heavy Industrial Development Land Off Seymour Drive-massive Reduction!!- Motivated Seller

George Town, Grand Cayman

MLS# 417257

**CI\$1,600,000**



**MARQUES RIDDICK**

345-233-5000

marques.riddick@remax.ky

One of the most prime development land parcels available! High traffic location with all the attributes needed for a successful mixed-use commercial/industrial development with Heavy Industrial Zoning. Perfect location for a warehouse. Central George Town Location, minutes to the Airport and Airport access road for easy commutes.

The property has great amenities, with storage sheds and covered work stations on site. There are also 2 bathrooms with plumbing. The property site is fully gated, with a cement wall and chain link fence that is locked at the front of the parcel. There are containers on the land that can be sold with the property, adding extra value.

## Essential Information

The information contained herein has been furnished by the owner and or their nominee and represented by them to be accurate. The listing company, agent and CIREBA MLS disclaims any liability or responsibility for any inaccuracies, errors or omissions in the represented information and all the information contained herein is subject to errors, omissions, price changes, prior sale or withdrawal, without notice and is at all times subject to verification by the purchaser.

Type  
**Land**

Status  
**Pen/Con**

MLS#  
**417257**

Listing Type  
**Industrial**

## Key Details

Width  
**119**

Depth  
**170**

Acreage  
**0.46**

View  
**Inland**

## Additional Feature

Covenants  
**No**