



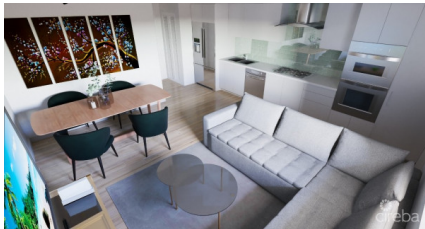
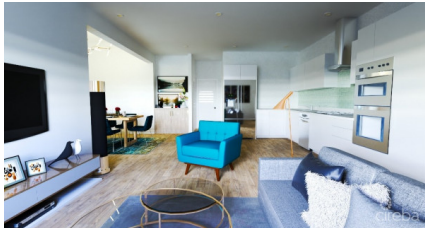
256 Crighton Building, Crewe Rd, PO BOX 1977,
Grand Cayman, KY1-1104, Cayman Islands
Phone: +1 (345) 949-7099
Fax: +1 (345) 949-6819
Email: info@cireba.com

Yarl 1 Bed + Den #16 Phase 2

George Town, Grand Cayman

MLS# 417381

CI\$449,000





MARK GAUS
 345-946-9961
 mark.gaus@remax.ky

Introducing George Town's newest, multi-phase residential community, YARL! With the incredible demand of Phase 1, we are now launching Phase 2! YARL is filled with amenities including a lovely pool area, pickleball court, gym, clubhouse and kids play area to name a few. This gated community is conveniently located on Linford Pierson Highway next to Downtown Reach. The location is amazing with direct proximity to schools, Grand Harbour, Harbour Reach, supermarkets, George Town Hospital and direct access to Seven Mile Beach Corridor. This neighbourhood will feature 1 bed, 1 bed plus den, 2 bed and 2 bed plus den options - perfect for a primary residence or rental investment.

Built to withstanding all weather as well as being energy efficient these homes are constructed with super strong concrete block, hurricane impact windows and doors as well as a standing seam metal roof. Rest assured knowing the Developer, National Builders, has completed numerous fantastic communities in Cayman over the past couple decades. Estimated completion is Q1 2025. Inquire today for your Information and Sales Brochure!

Essential Information

Type Residential	Status Pen/Con	MLS# 417381	Listing Type Condominiums
----------------------------	--------------------------	-----------------------	-------------------------------------

Key Details

Bed 1	Bath 1
-----------------	------------------

View
Garden View, Pool View

Year Built 2025	Sq.Ft. 920	Pets Allowed: Yes
---------------------------	----------------------	-----------------------------

Additional Feature

Den No	Floor Level 2	Furnished No
------------------	-------------------------	------------------------

Property Feature

Yes Fenced Yard	Yes Pool
---------------------------	--------------------