



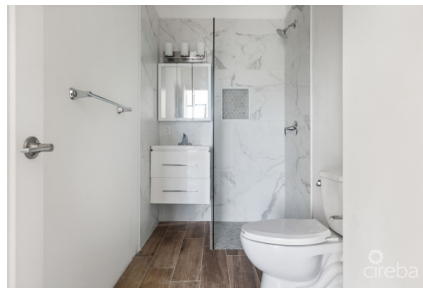
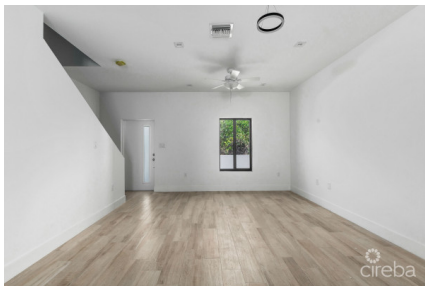
256 Crighton Building, Crewe Rd, PO BOX 1977,
Grand Cayman, KY1-1104, Cayman Islands
Phone: +1 (345) 949-7099
Fax: +1 (345) 949-6819
Email: info@cireba.com

Noble Park Townhome #2 - West Bay - Assignment With \$10k Worth Of Upgrades

West Bay, Grand Cayman

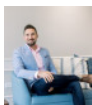
MLS# 417486

CI\$449,000





ELOISE JIGGINS
345-949-2100
eloise@c21cayman.com



ZANE KUTTNER
zane@c21cayman.com

Welcome to your dream townhome in the serene neighbourhood of West Bay. Nestled in a quiet and quaint setting, this brand new construction offers the epitome of modern living with an array of luxurious upgrades.

Step inside to discover a spacious and open floor plan that welcomes you with warmth and elegance. Crafted from sturdy concrete, this townhome boasts durability and longevity, ensuring your peace of mind for years to come.

Every detail has been meticulously curated, with over \$10,000 worth of upgrades enhancing the beauty and functionality of this home.

Indulge in the comfort of two generously sized bedrooms, each complete with its own ensuite bathroom. The contemporary design extends to the kitchen, where modernity meets functionality. Adorned with stainless steel appliances, quartz countertop and hardwood cabinets in a chic shaker style, the kitchen is a chefs delight, offering ample space to unleash your culinary creativity.

Beyond the confines of your abode, the surrounding neighborhood beckons with its charm and convenience. Situated across from a park, you'll relish in the tranquility of your surroundings, while being just moments away from the beach and the vibrant amenities of West Bay.

With its prime location, you'll find yourself effortlessly avoiding the hustle and bustle of traffic, allowing for seamless commutes and easy access to everything you desire.

Essential Information

Type	Status	MLS#	Listing Type
Residential	Reduced	417486	Condominiums

Key Details

Bed	Bath
2	2.5

View
Garden View

Year Built	Sq.Ft.
2024	1,350

Additional Feature

Den
No

Furnished
No