



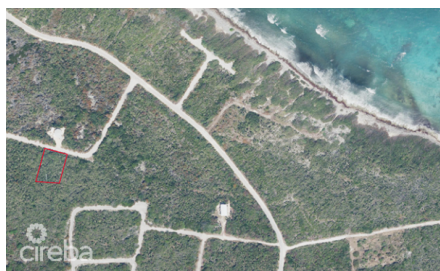
256 Crighton Building, Crewe Rd, PO BOX 1977,  
Grand Cayman, KY1-1104, Cayman Islands  
Phone: +1 (345) 949-7099  
Fax: +1 (345) 949-6819  
Email: info@cireba.com

## Little Cayman Lot 0.38 East End

Little Cayman East, Little Cayman

MLS# 417515

**CI\$49,000**



**HARRIET LOTT**  
harriet@tensails.ky

The property is Located in the Northeastern section of Little Cayman.

Looking for Paradise? This is it!! where you can Enjoy the tranquil Island Life!! minutes to the Best Beach on Little Cayman, at Point of Sand.

The perfect spot to build your vacation or retirement home, or Land Bank for the future, approx. 0.38 acres.

## Essential Information

Type	Status	MLS#	Listing Type
<b>Land</b>	<b>Reduced</b>	<b>417515</b>	<b>Little Cayman / Cayman Brac</b>

## Key Details

Width	Depth
<b>110</b>	<b>160</b>
Acreege	View
<b>0.38</b>	<b>Inland</b>