



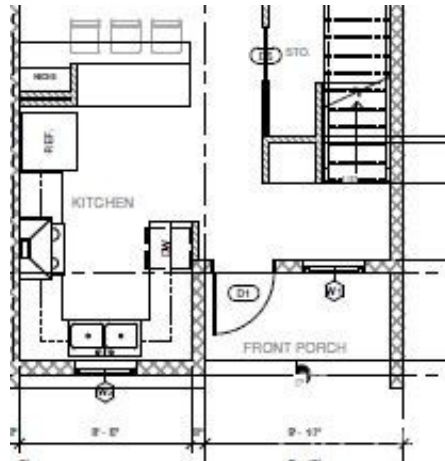
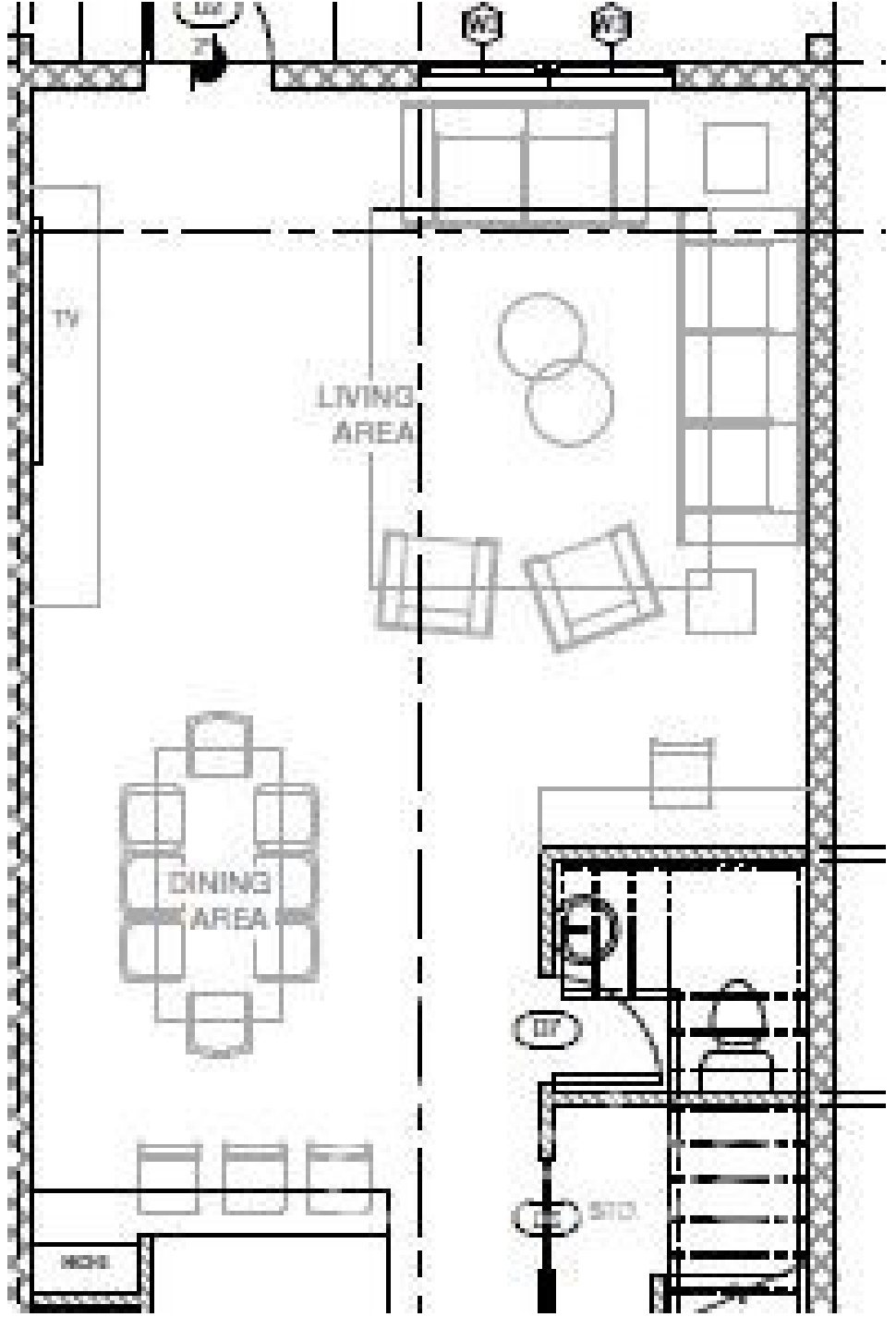
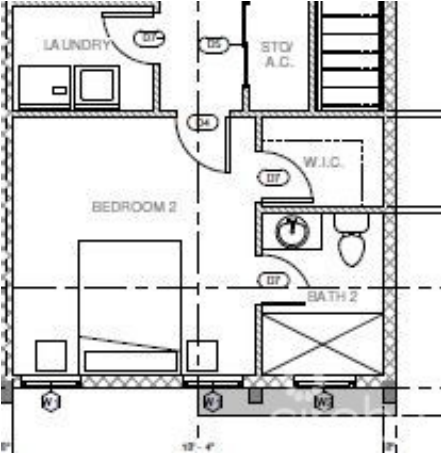
256 Crighton Building, Crewe Rd, PO BOX 1977,
Grand Cayman, KY1-1104, Cayman Islands
Phone: +1 (345) 949-7099
Fax: +1 (345) 949-6819
Email: info@cireba.com

Lavana Court 2 Bed Executive Home

Savannah / Lower Valley, Grand Cayman

MLS# 415095

CI\$495,000



The information contained herein has been furnished by the owner and or their nominee and represented by them to be accurate. The listing company, agent and CIREBA MLS disclaims any liability or responsibility for any inaccuracies, errors or omissions in the represented information and all the information contained herein is subject to errors, omissions, price changes, prior sale or withdrawal, without notice and is at all times subject to verification by the purchaser.



MICHELE BRYAN
 michele@c21cayman.com

Welcome to your ideal residence in our exclusive new gated development! Presenting Phase 1, featuring four elegant units scheduled for completion this year. Each stunning residence boasts 2 spacious bedrooms and 2.5 modern bathrooms, offering expansive square footage filled with an abundance of natural light. Step inside to discover beautiful finishes throughout, including a gourmet kitchen, elegant living spaces, and a cozy back patio perfect for relaxing. The master suite is a true retreat with its private balcony, providing a serene space to unwind and enjoy the tranquil surroundings. Additionally, this end unit home includes exclusive access to additional outside space to the side of the residence, ideal for those with little ones or simply looking for a private place to potter. Your safety and peace of mind are paramount, with a state-of-the-art security system installed in every unit. For those looking to move in with ease, an optional furniture package is available to ensure your new home is both stylish and comfortable from day one. Located in a quiet neighborhood, this development is soon to benefit from a new highway offering direct access to town, making your commute a breeze. Enjoy the perfect blend of seclusion and convenience, with the vibrant town center just 15 minutes away. This thoughtfully planned community features beautiful outdoor BBQ and recreational areas, perfect for socializing with neighbors or enjoying a quiet evening with family. Each unit comes with two allocated car parking spaces, ensuring convenience and ease of access. The development is designed to foster a sense of community while providing ample space for relaxation and outdoor activities. With lush landscaping and well-maintained communal spaces, residents can enjoy a balanced lifestyle that combines comfort, security, and outdoor enjoyment. Don't miss out on the opportunity to be a part of this exceptional community. Contact us today to learn more and secure your new home in this highly anticipated development.

Essential Information

Type Residential	Status Pen/Con	MLS# 415095	Listing Type Condominiums
----------------------------	--------------------------	-----------------------	-------------------------------------

Key Details

Bed 2	Bath 2.5
-----------------	--------------------

View
Garden View

Year Built 2023	Sq.Ft. 1,662	Pets Allowed: Yes
---------------------------	------------------------	-----------------------------

The information contained herein has been furnished by the owner and or their nominee and represented by them to be accurate. The listing company, agent and CIREBA MLS disclaims any liability or responsibility for any inaccuracies, errors or omissions in the represented information and all the information contained herein is subject to errors, omissions, price changes, prior sale or withdrawal, without notice and is at all times subject to verification by the purchaser.

Additional Feature

Den
No

Floor Level
2

Furnished
No