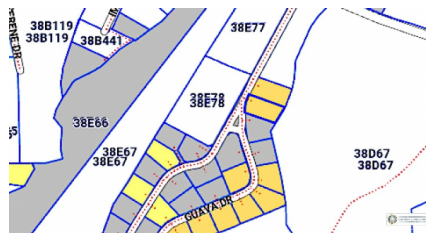
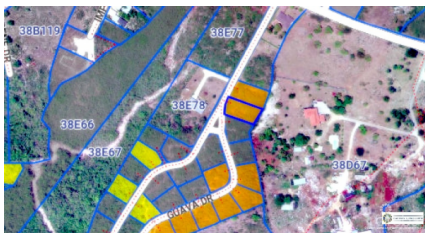


Guava Groves - House Lot 220

Savannah / Lower Valley, Grand Cayman

MLS# 415016

CI\$210,000



LAVERN WELCOME
 345-233-5228
 lavern.welcome@remax.ky

Excellent location and easy access to Countryside Shipping Center, Bodden Town public beach, and School. This property is filled and ready for your dream home or your next investment project. All the lots within Guava Groves are comprised of native limestone rock ranging in elevation from 10FT to 18FT above sea level. Covenants are in place to ensure that your investment is protected. Call me now to own this great piece of legacy.

Essential Information

Type	Status	MLS#	Listing Type
Land	Pen/Con	415016	Low Density Residential

Key Details

Width
80

Depth
154

Acreage
0.27

View
Inland