



256 Crighton Building, Crewe Rd, PO BOX 1977,  
Grand Cayman, KY1-1104, Cayman Islands  
Phone: +1 (345) 949-7099  
Fax: +1 (345) 949-6819  
Email: info@cireba.com

## Onegt Residences - Unit 722

George Town, Grand Cayman

MLS# 414253

**CI\$1,579,000**

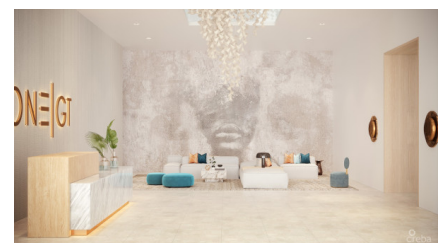


ONE|GT



UNIT TYPE **0.7**

BEDROOMS: 2  
BATHROOMS: 2  
INTERNAL SQ FT: 1,374  
INTERNAL SQ FT: 488  
TOTAL SQ FT: 1,862





**JEREMY HURST**  
345-623-1111  
jeremy@irg.ky



**HIVA AKHTARI**  
345-623-1111  
hiva@irg.ky

Cayman’s next landmark development project, known as ONE|GT, fuses the very best of contemporary urban living from around the world - from the vibrant rooftop beach clubs of Miami and LA, to the local piazzas and street cafés of Europe, and of course exquisite Caribbean artistic flair. Comprising a 178-suite boutique hotel and luxury residences, with amazing on-site amenities, ONE|GT is located at the edge of central George Town, on Goring Avenue, directly behind Bayshore Mall. With amazing on-site amenities, ONE|GT will be the capital’s first ten-storey structure, rising to 144’ above ground level and offering spectacular multi-aspect views. Its eleventh floor “Sky Club” with its unique infinity edge pool, private cabanas, bar & grille, yoga, treatment, and event areas, will bring a new level of sophisticated enjoyment to our islands, whilst its “signature” restaurant, grand café, and many other amenities will ensure owners, tenants and guests can enjoy ONE|GT to the fullest. There will also be a private residents’ pool, full gym, and separate residents’ entrance, along with onsite covered and valet parking and owner storage units available. Owners will also enjoy very solid returns on investment from ONE|GT's rental programs or can choose to rent their units on the open market. Estimated completion date is early 2025. Enjoy truly “elevated modern island living” at ONE|GT and invest now before prices elevate too! Unit Type D.1 This exquisite corner residence boasts two en-suite bedroom suites, one a master suite with a dual walk-in closets and direct access to the expansive wrap-around terrace. The unit has a full kitchen, with center aisle and a large living/dining area, providing great indoor/outside living opportunities. Enjoy truly “elevated modern island living” at ONE|GT and invest now before prices elevate too!

## Essential Information

Type	Status	MLS#	Listing Type
<b>Residential</b>	<b>Current</b>	<b>414253</b>	<b>Condominiums</b>

## Key Details

Bed	Bath
<b>2</b>	<b>2</b>
View	
<b>Water View, Inland</b>	
Year Built	Sq.Ft.
<b>2022</b>	<b>1,565</b>

## Additional Feature

The information contained herein has been furnished by the owner and or their nominee and represented by them to be accurate. The listing company, agent and CIREBA MLS disclaims any liability or responsibility for any inaccuracies, errors or omissions in the represented information and all the information contained herein is subject to errors, omissions, price changes, prior sale or withdrawal, without notice and is at all times subject to verification by the purchaser.

Den  
**No**

Floor Level  
**7**

Furnished  
**No**

## Property Feature

Yes  
**Fenced Yard**

Yes  
**Pool**