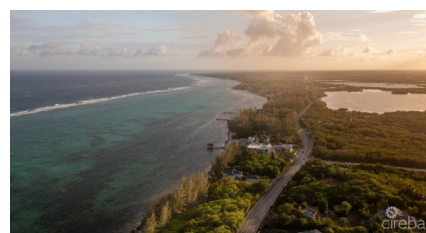
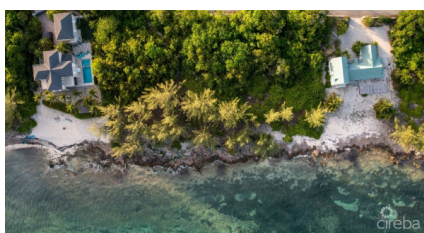
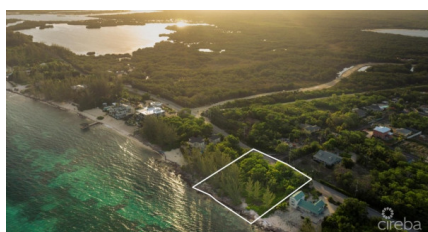
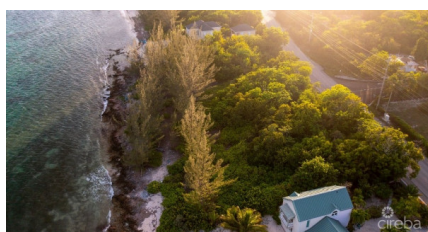


Pease Bay Beachfront Development Parcels

Bodden Town / Breakers, Grand Cayman

MLS# 413207

US\$1,800,000



JAMES BOVELL

345-945-4000

james.bovell@remax.ky

Rare, large 0.97 acre parcel with over 200 feet of ocean frontage in lovely neighborhood of Pease Bay. Featuring a depth at over 190 feet, this double parcel is large enough for an estate home offering an expanded footprint, room for a tennis court, pool, privacy and warm Caribbean breezes. Also has the ability to become a development site with good density under the Beach/Resort Residential zoning garnering 20 units/60 bedrooms. Uniquely placed lot captures both radiant sunrises and stunning sunsets.

Essential Information

Type
Land

Status
Current

MLS#
413207

Listing Type
**Beach / Hotel /
Tourism**

Key Details

The information contained herein has been furnished by the owner and or their nominee and represented by them to be accurate. The listing company, agent and CIREBA MLS disclaims any liability or responsibility for any inaccuracies, errors or omissions in the represented information and all the information contained herein is subject to errors, omissions, price changes, prior sale or withdrawal, without notice and is at all times subject to verification by the purchaser.

Width
203

Depth
227

Acreage
0.97

View
Beach Front, Water Front

Additional Feature

Zoning
**Beach
Resort/Residential**

Covenants
No

Approx. Water Frontage
201

Road Frontage
203