



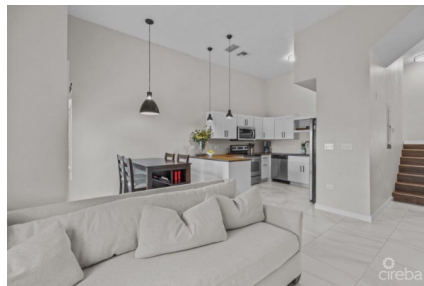
256 Crighton Building, Crewe Rd, PO BOX 1977,  
Grand Cayman, KY1-1104, Cayman Islands  
Phone: +1 (345) 949-7099  
Fax: +1 (345) 949-6819  
Email: info@cireba.com

## Upgraded Lakeland Villas, 2 Bed + Den And Garage (over \$100k In Renovations)

George Town, Grand Cayman

MLS# 417609

**CI\$635,000**





**LESLIE BROMFIELD**  
 leslie@tridentproperties.ky

Discover modern living at its best with this newly renovated, stylish 3-level condo at Lakeland Villas community. Conveniently positioned just off Linford Pierson Highway, this charming 2-bedroom, 2.5-bathroom home spans an impressive 1,663 square feet and is perfect for those seeking a blend of comfort and convenience. Upon entering, you're greeted by an open-plan living space that seamlessly flows into a sleek, modern kitchen. Each bedroom is a haven of rest with custom closet organizers adding a touch of style and practicality. The bonus den provides flexible space, ideal for a home office or an optional third bedroom, ensuring that this home meets your unique needs. Additional highlights include a private garage with ample space for storage and covered parking. The condo is elevated at 15 feet above sea level, offering added peace of mind to this family and pet-friendly neighborhood. Outside, you're just a short drive from Grand Harbour and surrounding areas, with an array of grocery, pharmacy, gyms, food and beverage options, and more... placing everyday essentials and leisure activities at your doorstep! With every detail thoughtfully addressed in this turnkey home—from fresh aesthetics to practical enhancements—18-Lakeland Villas on Old Crewe Road offers an exceptional living experience in a prime location. Make it yours today and start living the lifestyle you deserve!

## Essential Information

Type <b>Residential</b>	Status <b>Current</b>	MLS# <b>417609</b>	Listing Type <b>Condominiums</b>
----------------------------	--------------------------	-----------------------	-------------------------------------

## Key Details

Bed <b>2</b>	Bath <b>2.5</b>
-----------------	--------------------

View  
**Garden View**

Year Built <b>2008</b>	Sq.Ft. <b>1,663</b>	Pets Allowed: <b>Yes</b>
---------------------------	------------------------	-----------------------------

## Additional Feature

Den <b>Yes</b>	Floor Level <b>1</b>	Furnished <b>Yes</b>
-------------------	-------------------------	-------------------------