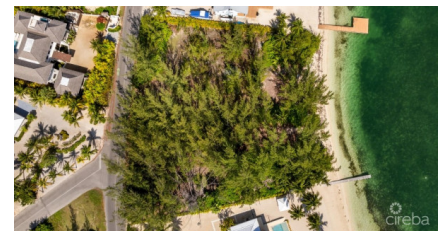
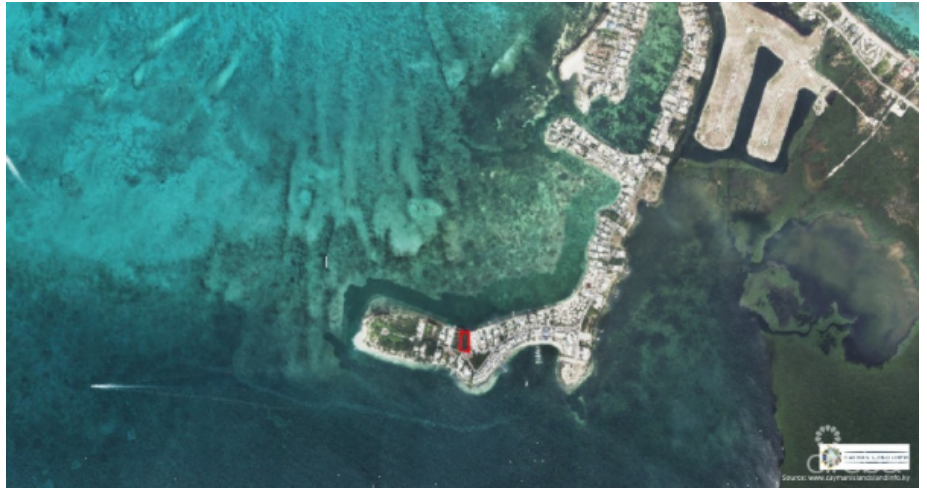


## Rare & Large Ocean Front Parcel In Kaibo

Rum Point, Grand Cayman

MLS# 417618

**US\$3,250,000**





**NICHOLAS DIBB**  
 345-233-3000  
 nick.dibb@remax.ky



**JAMES BOVELL**  
 345-945-4000  
 james.bovell@remax.ky

RARE LARGE OCEANFRONT PARCEL IN THE COVETED STARFISH POINT / KAIBO AREA OF RUM POINT.

Nestled along the pristine shores of theKaibo neighborhood at Starfish Point, this expansive parcel of land offers an unparalleled opportunity to craft your ideal property or vacation getaway. Spanning a generous 0.66 acres, this oversized lot provides ample space for your imagination to roam. One of the onlyremainingparcels in this coveted area, this deep parcel is for sale for the time in decades and stretches an impressive 250 feet inland, ensuring privacy and seclusion from the bustling world beyond.

Step onto your very own 100 feet of beachfront, where the gentle lapping of waves and the panoramic blue water vistas of the North Sound create a tranquil haven for relaxation and rejuvenation. Whether youre a nature enthusiast, a water sports aficionado, or simply seeking solace in the serenity of coastal living, this beachfront oasis promises endless possibilities. This exceptional parcel of land is located on the same street as the highest-performing luxury vacation villa on island and comes with an enticing bonus: if sold at asking price, it will include exclusive architectural plans crafted by renowned architect John Doak. These plans offer a blueprint for a truly remarkable residence that harmonizes seamlessly with the coastal surroundings and maximizes the potential of this extraordinary property.

Seize the opportunity to make this coastal paradise your own. Whether youre seeking a permanent residence, a vacation home, or an investment opportunity, this rare oversized parcel of land offers the ideal foundation for your aspirations. Dont miss your chance to own a slice of waterfront paradise in this coveted locale of Kaibo.

## Essential Information

Type	Status	MLS#	Listing Type
<b>Land</b>	<b>Current</b>	<b>417618</b>	<b>Low Density Residential</b>

## Key Details

Width	Depth
<b>133</b>	<b>269</b>
Acreage	View
<b>0.66</b>	<b>Beach Front, Water Front</b>