



256 Crighton Building, Crewe Rd, PO BOX 1977,  
Grand Cayman, KY1-1104, Cayman Islands  
Phone: +1 (345) 949-7099  
Fax: +1 (345) 949-6819  
Email: info@cireba.com

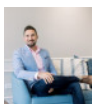
## Chic, Designer-styled 1-bedroom In Downtown Reach

George Town, Grand Cayman

MLS# 417909

**CI\$360,000**





**ZANE KUTTNER**  
zane@c21cayman.com

Presenting a charming and stylish 1-bed, 1- bath unit at Downtown Reach. Built in 2021 and elegantly decorated by Living.ky, this end unit sets itself apart immediately with a calm and comforting aesthetic, with loads of natural light. Enjoy garden views from every window and the privacy provided by the lush landscaping.

Storage is in no short supply with dedicated storage spaces as well as a utility area.

The open patio is conveniently located steps away from two pools and the gym, making it one of the best-situated units in Downtown Reach.

For the discerning investor, units in this complex are highly sought after as they rent extremely well and show healthy returns with very low vacancy rates. This unit generates CI\$30,000 annually, with potential to increase.

Strategically positioned along Linford Pearson Highway, this complex offers swift commutes to George Town and various amenities including the shops at Grand Harbour and Harbour Walk, banks, schools, gyms, restaurants, and the South Sound Boardwalk. Enjoy the added luxury of on-site amenities such as a pools, gym, kids playground and a pet-friendly environment. This property is an opportunity not to be missed.

## Essential Information

Type	Status	MLS#	Listing Type
<b>Residential</b>	<b>New</b>	<b>417909</b>	<b>Condominiums</b>

## Key Details

Bed	Bath
<b>1</b>	<b>1</b>

View  
**Garden View, Pool View**

Year Built	Sq.Ft.	Pets Allowed:
<b>2021</b>	<b>670</b>	<b>Yes</b>

## Additional Feature

Den	Floor Level	Furnished
<b>No</b>	<b>1</b>	<b>Yes</b>

## Property Feature

Yes

**Fenced Yard**

Yes

**Pool**