



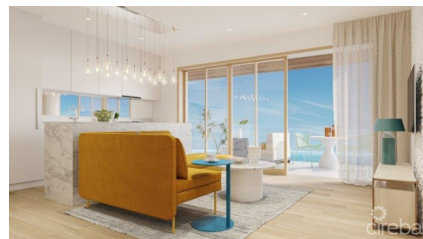
256 Crighton Building, Crewe Rd, PO BOX 1977,  
Grand Cayman, KY1-1104, Cayman Islands  
Phone: +1 (345) 949-7099  
Fax: +1 (345) 949-6819  
Email: info@cireba.com

## One Gt Downtown Gt Nw Views Motivated Vendor

George Town, Grand Cayman

MLS# 418191

**CI\$689,000**





**HEIDI KISS**  
 345-623-1400  
 heidi.kiss@evrealstate.com



**JON KISS**  
 345-623-1400  
 jon.kiss@evrealstate.com

ONE|GT, a landmark Cayman Islands development. Welcome to the first downtown 10-storey residential hotel building rising over 140 feet above sea level. The design is inspired by global urban living, blending elements from Miami, LA, Europe, and the Caribbean. ONE GT has amenities such as an 11th Sky Club, an infinity-edge pool, private cabanas, a bar and grille, yoga, treatment areas, and event spaces. It will have a signature restaurant, a grand café, and a private residents' pool. The building also has a full gym, a separate residents' entrance, covered and valet parking, and owner storage units. The Investment Opportunities are strong through rental programs, such as short-term Airbnb or VRBO or long-term rentals. This beauty will be completed in the fall of 2025. Invest now and watch the prices and appreciation rise. One bedroom, one bath with an articulated wall for adaptable space. It includes a full kitchen, breakfast bar, lounge area, and spacious patio. #814 has impressive views to the West and North. Enjoy the sunset view all along Seven Mile Beach and West Bay. Agent Owned Assignment

## Essential Information

Type <b>Residential</b>	Status <b>Current</b>	MLS# <b>418191</b>	Listing Type <b>Condominiums</b>
----------------------------	--------------------------	-----------------------	-------------------------------------

## Key Details

Bed <b>1</b>	Bath <b>1</b>
-----------------	------------------

View  
**Water View**

Year Built <b>2025</b>	Sq.Ft. <b>606</b>
---------------------------	----------------------

## Additional Feature

Den <b>No</b>	Floor Level <b>8</b>	Furnished <b>No</b>
------------------	-------------------------	------------------------