



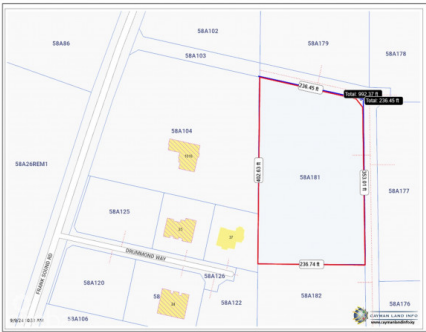
256 Crighton Building, Crewe Rd, PO BOX 1977,
Grand Cayman, KY1-1104, Cayman Islands
Phone: +1 (345) 949-7099
Fax: +1 (345) 949-6819
Email: info@cireba.com

2 Acres Off Frank Sound Road

Midland East, Grand Cayman

MLS# 418201

CI\$470,000



The information contained herein has been furnished by the owner and or their nominee and represented by them to be accurate. The listing company, agent and CIREBA MLS disclaims any liability or responsibility for any inaccuracies, errors or omissions in the represented information and all the information contained herein is subject to errors, omissions, price changes, prior sale or withdrawal, without notice and is at all times subject to verification by the purchaser.



STEVE PARSONS
345 949-5916
steve@propertypals.ky

Ideal site for whatever you're thinking: subdivide it for house lots, build apartments, detached home, cottages OR keep this one for yourself and create the perfect place for your life! Plenty of room for a fabulous home, outdoor entertaining area, parking for cars and boats...room to roam and off the main Frank Sound Road for privacy and peace. Sitting at 4ft above sea level. Width of lot varies from 407 ft to 355 ft on each boundary. Call us and let's talk about options and making this one yours!

Essential Information

Type	Status	MLS#	Listing Type
Land	Current	418201	Low Density Residential

Key Details

Width	Depth
236	375
Acreage	View
2.00	Garden View