



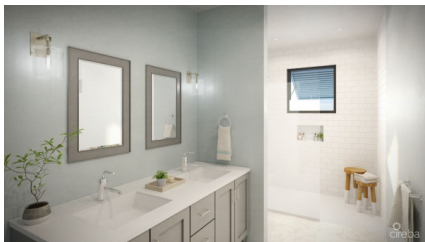
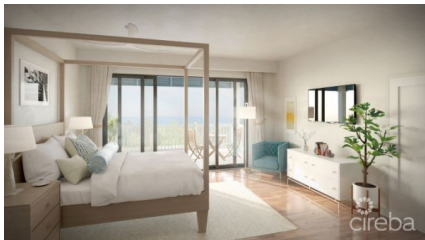
256 Crighton Building, Crewe Rd, PO BOX 1977,
Grand Cayman, KY1-1104, Cayman Islands
Phone: +1 (345) 949-7099
Fax: +1 (345) 949-6819
Email: info@cireba.com

Olea Two-storey Townhome - Residence 224

Seven Mile Corridor, Grand Cayman

MLS# 418212

US\$1,949,950



**ANTONETTE BAPTIST**

antonette.baptist@provenanceproperties.com

Home is where the heart is, and the townhomes are at the heart of OLEA. Echoing classic Caribbean architectural heritage rendered in contemporary lines, this two-storey townhome features an open floor plan, double carport and private garden. All bedrooms have an ensuite bathroom and the master boasts a spacious walk-in closet. Residents will enjoy central amenities including beautifully landscaped common areas, a resort-style pool and a fully-equipped gym. Live in one of the most desirable neighbourhoods in Grand Cayman's real estate portfolio. OLEA is a waterfront community located to the south of Camana Bay's Town Centre. Adjacent to Cayman International School, it offers easy connectivity to the Town Centre and Seven Mile Beach. OLEA's amenities will include a lazy river flowing into a resort-style pool, beautifully landscaped common areas and a fully equipped gym. All residences will have solar panels and be cooled with the latest geothermal systems. Interiors will integrate elements such as LED lighting, energy-efficient appliances and water-conserving plumbing fixtures. Spanning 685 acres from Seven Mile Beach and the Caribbean Sea to the North Sound, Camana Bay is the islands premier destination for global business and Caribbean community as well an epicentre of fashion, food, entertainment, culture and fun. Estimated completion date: November 2022

Essential Information

Type	Status	MLS#	Listing Type
Residential	Current	418212	Standalone Home (Part of Strata)

Key Details

Bed	Bath
3	3.5
View	
Garden View	
Year Built	Sq.Ft.
2025	2,660

Additional Feature

Den	Pool	Furnished	Garage
No	Yes	No	No

Property Feature

Yes	Yes
Fenced Yard	Pool