



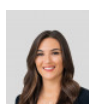
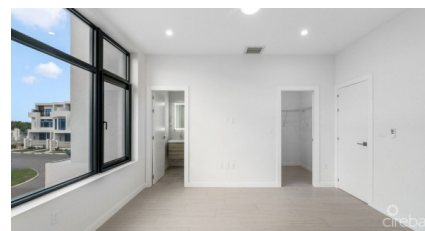
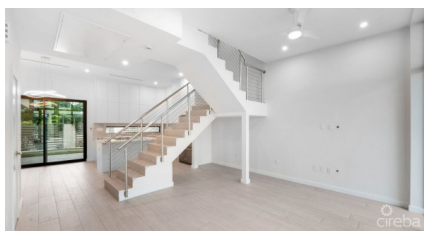
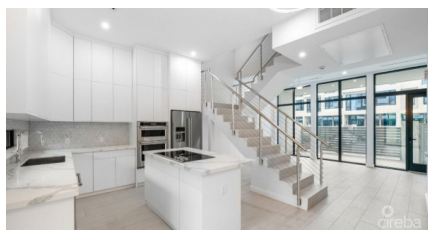
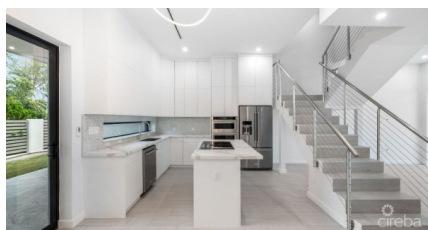
256 Crighton Building, Crewe Rd, PO BOX 1977,  
Grand Cayman, KY1-1104, Cayman Islands  
Phone: +1 (345) 949-7099  
Fax: +1 (345) 949-6819  
Email: info@cireba.com

## Bahia 13 - Brand New Townhome

South Sound, Grand Cayman

MLS# 418225

**CI\$995,000**



**BIANCA ALBERGA**

345-233-5224

bianca.alberga@remax.ky

Live at Bahia, Cayman's newest development! This 3 bedroom, 3.5 bathroom, 2097 square foot townhome is designed for seamless indoor-outdoor living, featuring a tasteful interior with wood panel flooring throughout, quality appliances, high-design bathroom fittings, and a motorized screen on the ground floor patio.

The incredibly spacious primary bedroom takes up the entire 3rd floor with 2 walk-in closets, a large bathroom and private balcony. Laundry and two additional bedrooms make up the 2nd floor with one bedroom featuring an attached balcony.

Enjoy resort-style amenities, including a 50-meter training pool, outdoor entertainment cabana areas, owners clubhouse, yoga studio, indoor gym, children's playground and a communal tennis and pickleball court. Additionally, this fully gated community offers peace of mind with a video entry system.

Bahia has been completed with ICF walls, poured concrete roofs, and reflective impact-rated windows for hurricane resistance and energy efficiency. Smart wiring and energy-efficient appliances ensure low utility costs and future-proofing for your home.

## Essential Information

Type <b>Residential</b>	Status <b>Current</b>	MLS# <b>418225</b>	Listing Type <b>Condominiums</b>
----------------------------	--------------------------	-----------------------	-------------------------------------

## Key Details

Bed <b>3</b>	Bath <b>3.5</b>
-----------------	--------------------

View  
**Garden View**

Year Built <b>2024</b>	Sq.Ft. <b>2,097</b>	Pets Allowed: <b>Yes</b>
---------------------------	------------------------	-----------------------------

## Additional Feature

Den <b>No</b>	Floor Level <b>1</b>	Furnished <b>No</b>
------------------	-------------------------	------------------------

## Property Feature

Yes <b>Fenced Yard</b>	Yes <b>Pool</b>
---------------------------	--------------------