



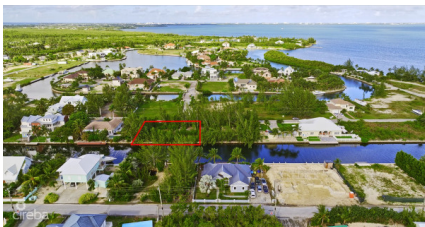
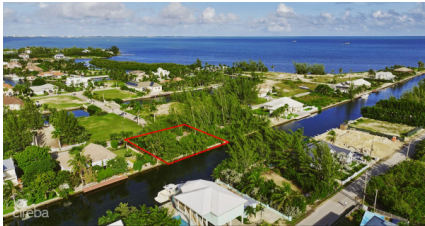
256 Crighton Building, Crewe Rd, PO BOX 1977,
Grand Cayman, KY1-1104, Cayman Islands
Phone: +1 (345) 949-7099
Fax: +1 (345) 949-6819
Email: info@cireba.com

Canal Front Parcel - Sunrise Landing

Savannah / Lower Valley, Grand Cayman

MLS# 418444

CI\$329,500



MICHELE BRYAN

michele@c21cayman.com

Build your dream home on this prime canal-front lot, nestled in a prestigious neighborhood of high-end residences with direct, easy access to the North Sound. Enjoy the best of Cayman's boating lifestyle right from your doorstep, with quick access to fishing, watersports, and the serene beauty of the North Sound. Plus, this location offers the convenience of being close to all the local amenities of Savannah, including Countryside Shopping Village with its supermarkets, cafes, and shops. This lot offers the ideal blend of luxury, convenience, and lifestyle—perfect for creating a home that takes full advantage of everything this stunning locale has to offer.

Essential Information

| | | | |
|---------------------|--------------------------|-----------------------|--|
| Type Land | Status Current | MLS# 418444 | Listing Type Low Density Residential |
|---------------------|--------------------------|-----------------------|--|

Key Details

| | |
|------------------------|----------------------------|
| Width 115 | Depth 110 |
| Acreage 0.29 | View Canal Front |