



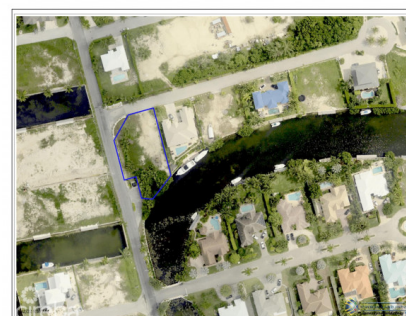
256 Crighton Building, Crewe Rd, PO BOX 1977,
Grand Cayman, KY1-1104, Cayman Islands
Phone: +1 (345) 949-7099
Fax: +1 (345) 949-6819
Email: info@cireba.com

Super Canal Front Lot On Peaceful Close

Prospect/Spotts, Grand Cayman

MLS# 418485

CI\$399,000



JOHN VAN RYSWYK

345-926-9926
john@milestone.ky



SOPHIE MILES

345 926-9926
sophie@milestone.ky

Super canal front lot for a family sized home in a gated, low-density community with easy access to the North Sound. The lot has been cleared and filled, with a cut in the seawall to create either a boat ramp or inset boat slip. Now priced amazingly!

Essential Information

Type
Land

Status
Current

MLS#
418485

Listing Type
**Low Density
Residential**

Key Details

The information contained herein has been furnished by the owner and or their nominee and represented by them to be accurate. The listing company, agent and CIREBA MLS disclaims any liability or responsibility for any inaccuracies, errors or omissions in the represented information and all the information contained herein is subject to errors, omissions, price changes, prior sale or withdrawal, without notice and is at all times subject to verification by the purchaser.

Width
70

Depth
155

Acreage
0.40

View
Canal Front