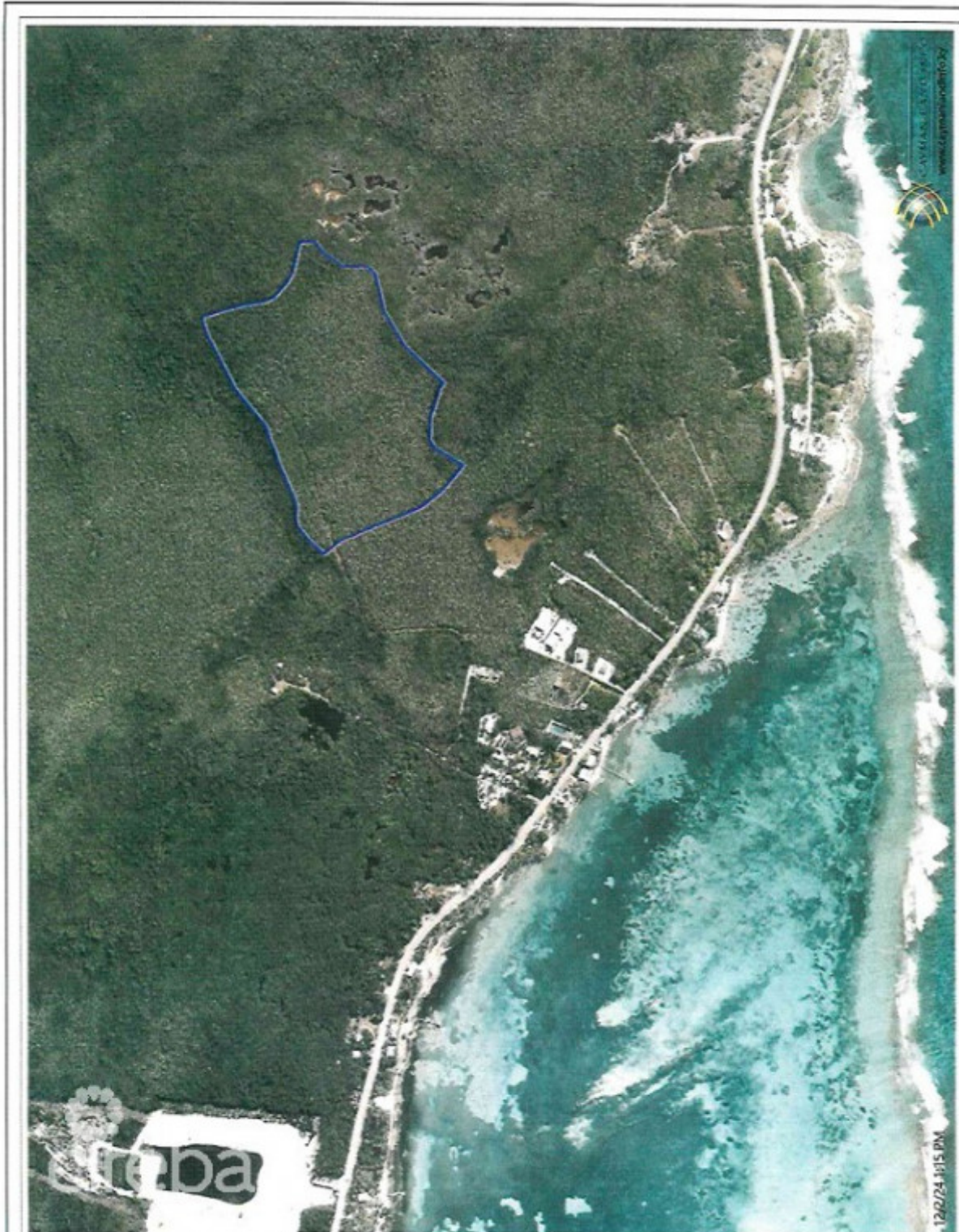


## East End Land

East Interior, Grand Cayman

MLS# 418541

**CI\$2,900,000**





**JON-DAVID THOMPSON**  
jondavid@eracayman.com



**PAUL THOMPSON**  
345 945-6000  
paul.thompson@eracayman.com

Explore the endless potential of this expansive 36-acre parcel of pristine land, nestled in the tranquil East Interior. Perfectly positioned for development, this vast property offers a blank canvas for visionary projects such as a private estate, eco-resort, agricultural ventures, or residential subdivision. Features: Prime Location: Situated in a serene area, away from the bustle, yet within reach of essential amenities. Development Potential: Ample space for large-scale projects with significant investment appeal. Natural Beauty: Lush surroundings provide an idyllic backdrop for nature-inspired developments. Accessibility: Convenient road access ensures seamless connectivity. Whether you're an investor seeking a lucrative opportunity or a developer with big dreams, this rare property is ready to bring your vision to life.

## Essential Information

Type	Status	MLS#	Listing Type
<b>Land</b>	<b>Current</b>	<b>418541</b>	<b>Low Density Residential</b>

## Key Details

Width	Depth
<b>980</b>	<b>1,586</b>
Acreage	View
<b>36.00</b>	<b>Garden View</b>