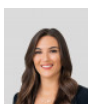


1.2 Acre Low Density Parcel

Savannah / Lower Valley, Grand Cayman

MLS# 418570

CI\$675,000



BIANCA ALBERGA

345-233-5224

bianca.alberga@remax.ky

This 1.2-acre low-density residential lot offers stunning water views and natural protection from coastal elements with its surrounding mangroves. It combines privacy and development potential, making it ideal for the discerning developer seeking opportunities for an apartment complex or ocean-view home. The property has the main water supply and road access already piped to the boundary, reducing infrastructure costs and accelerating project timelines. The owner will also grant an easement over the existing road, simplifying access for future owners or developers.

Located in a growing area, this property offers privacy, natural beauty, and excellent development potential.

Essential Information

Type
Land

Status
Current

MLS#
418570

Listing Type
**Low Density
Residential**

Key Details

Width
84

Depth
561

Acreage
1.20

View
Water View