



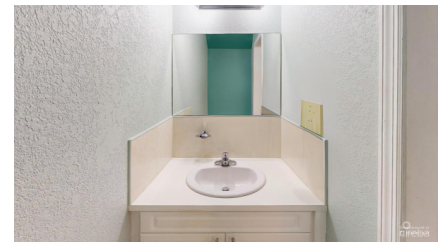
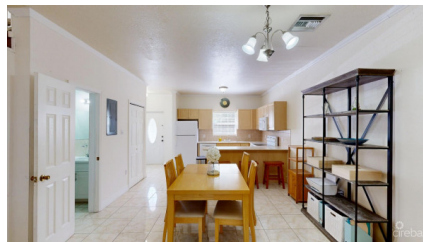
256 Crighton Building, Crewe Rd, PO BOX 1977,
Grand Cayman, KY1-1104, Cayman Islands
Phone: +1 (345) 949-7099
Fax: +1 (345) 949-6819
Email: info@cireba.com

Hyre Point Large One Bedroom

South Sound, Grand Cayman

MLS# 418894

CI\$358,000





JACQUELINE BEJI
345 949-9838
info@ritchrealty.ky

Spacious & Modern 1-Bedroom Townhome in a Pet-Friendly Community Discover this charming one-bedroom, 1.5-bathroom townhome, perfectly situated in a pet-friendly complex with fantastic amenities. Spanning 993 square feet over two floors, this bright and airy unit offers a well-designed living space in a prime location—just minutes from supermarkets, the airport, restaurants, hospitals, banks, schools, shops, and more! The modern kitchen features newer appliances, sleek granite countertops, and a spacious breakfast bar, seamlessly flowing into the large dining and living areas. Step outside to your backyard space, perfect for relaxing or entertaining. Upstairs, the expansive primary suite boasts an en-suite bath and double closets, offering ample storage. The unit also benefits from air conditioning on a regular maintenance schedule for year-round comfort. Enjoy the complex's inviting swimming pool—a perfect retreat to cool off and unwind. Plus, there's ample parking for you and your guests. Whether you're a first-time homebuyer or looking for a smart investment opportunity, this home checks all the boxes. Call today to schedule your private viewing!

Essential Information

Type Residential	Status New	MLS# 418894	Listing Type Condominiums
----------------------------	----------------------	-----------------------	-------------------------------------

Key Details

Bed 1	Bath 1.5
-----------------	--------------------

View
Garden View

Year Built 2008	Sq.Ft. 993	Pets Allowed: Yes
---------------------------	----------------------	-----------------------------

Additional Feature

Den No	Floor Level 1	Furnished Yes
------------------	-------------------------	-------------------------